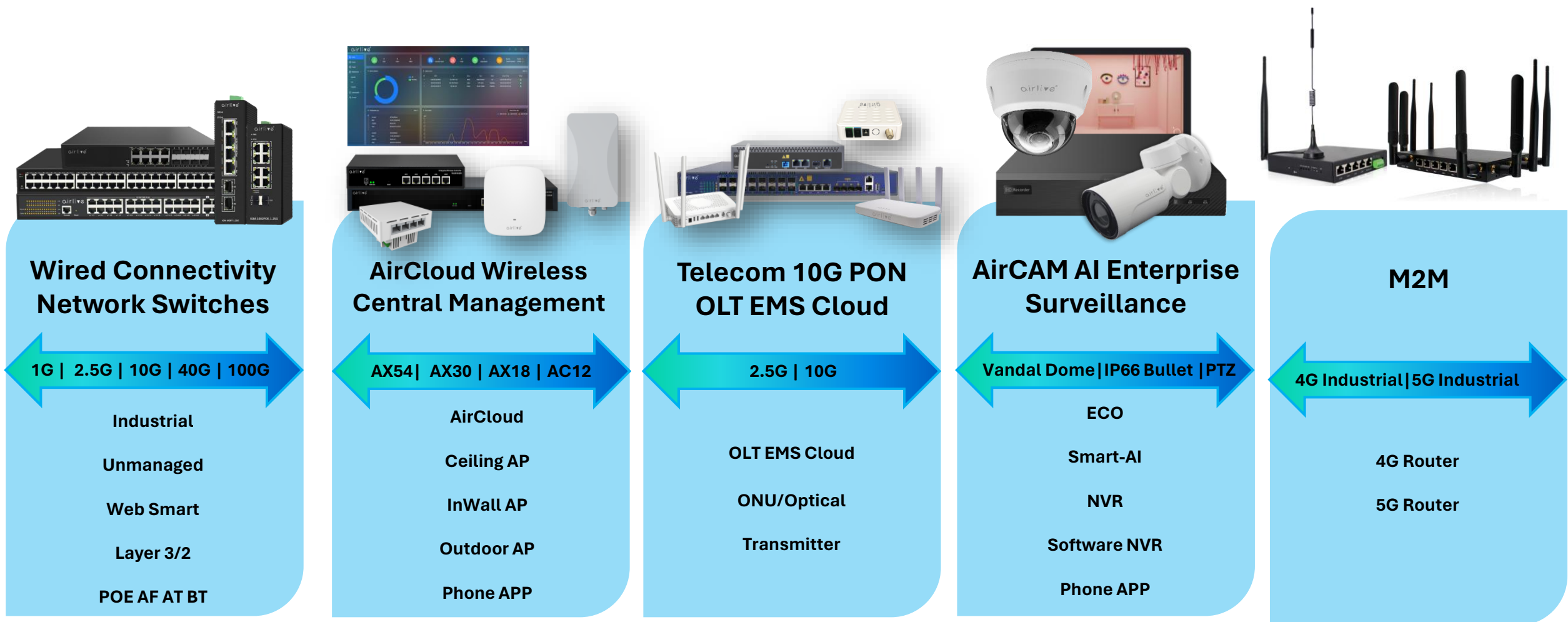




AirLive Product Catalog

— AirLive Technology Corporation —





10G | 2.5G | 100G

MULTI GIGA SWITCH

10G | 2.5G Family



unmanaged



web smart



layer 3

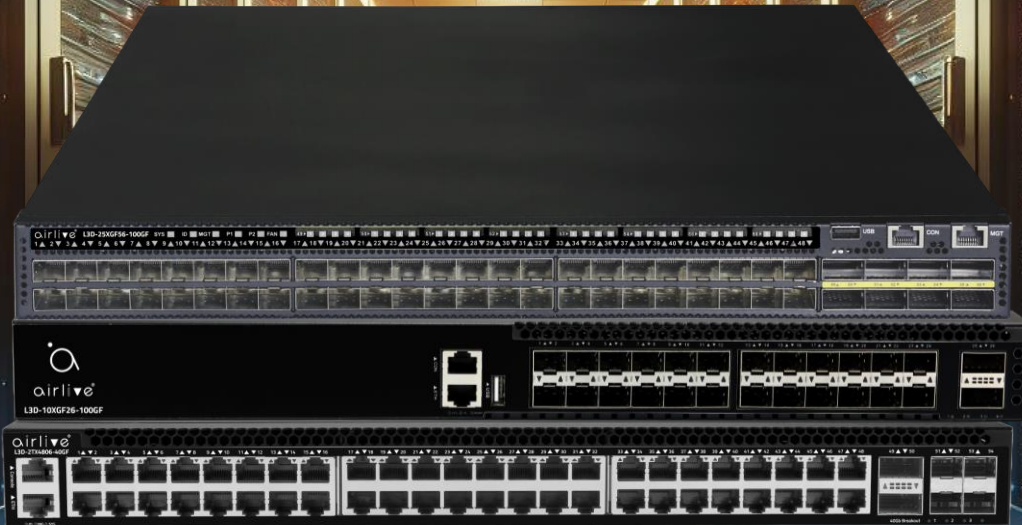
airlive®

Data Centre Switch

- Layer3
- Full Port 2.5G 10G 25G 100G
- Full Fiber
- 24/32/48/54 port
- Dual Power Redundant

Application

- Data Centre/ Telcom Service/ AI
Data Centre/High Speed Services

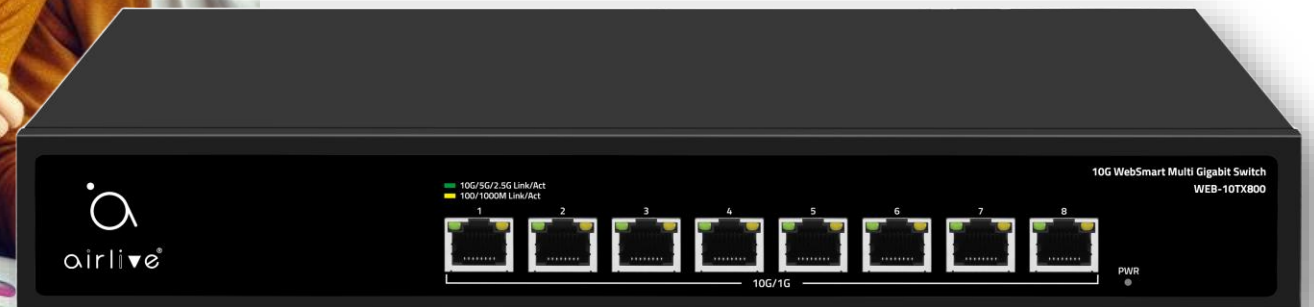




Full Range 10G Switch

upgrade your exist network

- Unmanaged/Web/Layer3
- 8~48 Port
- Full 10G port
- 10G RJ45 support



airlive®

Full Range 2.5G Switch

upgrade your exist network

- Unmanaged/Web/Layer3
- 4~48 Port
- Full 2.5G port
- 10G Fiber support
- PoE AT/BT support



airlive



2.5G Revolutionizing network

- **High-Definition Video Streaming:** Perfect for 4K and higher resolutions, providing the necessary throughput for uninterrupted streaming.
- **Wi-Fi 6 Networks:** Complementing the latest Wi-Fi 6 technology by maximizing its potential with higher transmission speeds.
- **Gaming:** Offering gamers a competitive edge with faster download speeds and smoother online play.
- **Smart Homes and Offices:** Enhancing the connected experience in smart buildings with faster data transfer for numerous IoT devices.
- **Content Creation:** Assisting creators and professionals in quickly uploading and downloading large media files.

Industrial Switch

Full Range industrial Switch

- Unmanaged
- Layer2
- Layer3
- Operation temperature
 - -40c to 85c
- 4~14 Port
- Giga to 2.5G
- Fiber support
- PoE AT/BT support



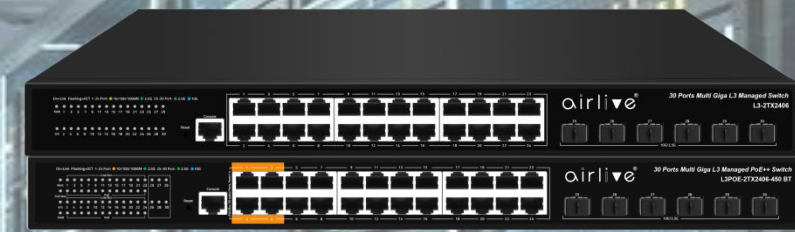
Industrial Switch Application

- **Factory Automation:** Connecting equipment and ensuring real-time transmission for automated processes.
- **Power Substations:** Ensuring stable network support for critical energy distribution.
- **Transportation Systems:** Supporting communication for intelligent transportation systems (ITS).
- **Mining:** Connecting devices in remote and harsh mining locations.





Web Smart



Layer 3



Core Switch



Layer 2



Unmanaged

A detailed illustration of an astronaut in a white spacesuit with red stripes and an American flag patch, standing on the lunar surface. The astronaut is holding a tool. In the background, the Earth is visible as a large, glowing blue and green sphere with city lights. A satellite or space station is seen in the upper right corner, emitting a beam of light. The scene is set against a starry space background.

**With Airlive
Always Connected**

AirLive Solution Enterprise Wireless

Enterprise
Wireless
Controller

Enterprise
Wireless
Ceiling
AP

Enterprise
Wireless
Outdoor
CPE

Enterprise
Inwall
AP

Enterprise
Wireless
Cloud

The Family - AirCloud and Wireless AP



**Central
Management**

Cloud

**WiFi
Roaming**

**No AP number
Limit via
Cloud**

**11AX
Ceiling/ In-Wall/
Outdoor**

PoE

24/7

**Wireless
Controller**

AirCloud is a cloud-based software controller, developed by AirLive which is specially designed for managing AirLive Wireless Access Points, including ceiling AP, In-wall AP, and outdoor AP (CPEs) and hardware wireless controller in option such as backup. Each device (AP) can work as stand-alone AP for cyber integration or, to manage centrally via AirCloud.

Key features of AirCloud

- ✓ Centralized Management | Multiple APs Setting | Monitoring
- ✓ Automated Configuration Template
- ✓ Online Customize Auth Portal
- ✓ 1 Year Configure Log Record
- ✓ 2 Level Account
- ✓ Security features



AirCloud Seamless Wireless Connectivity

AirCloud Cloud Portal - Supported Equipment



Wireless Controller



Wireless AP



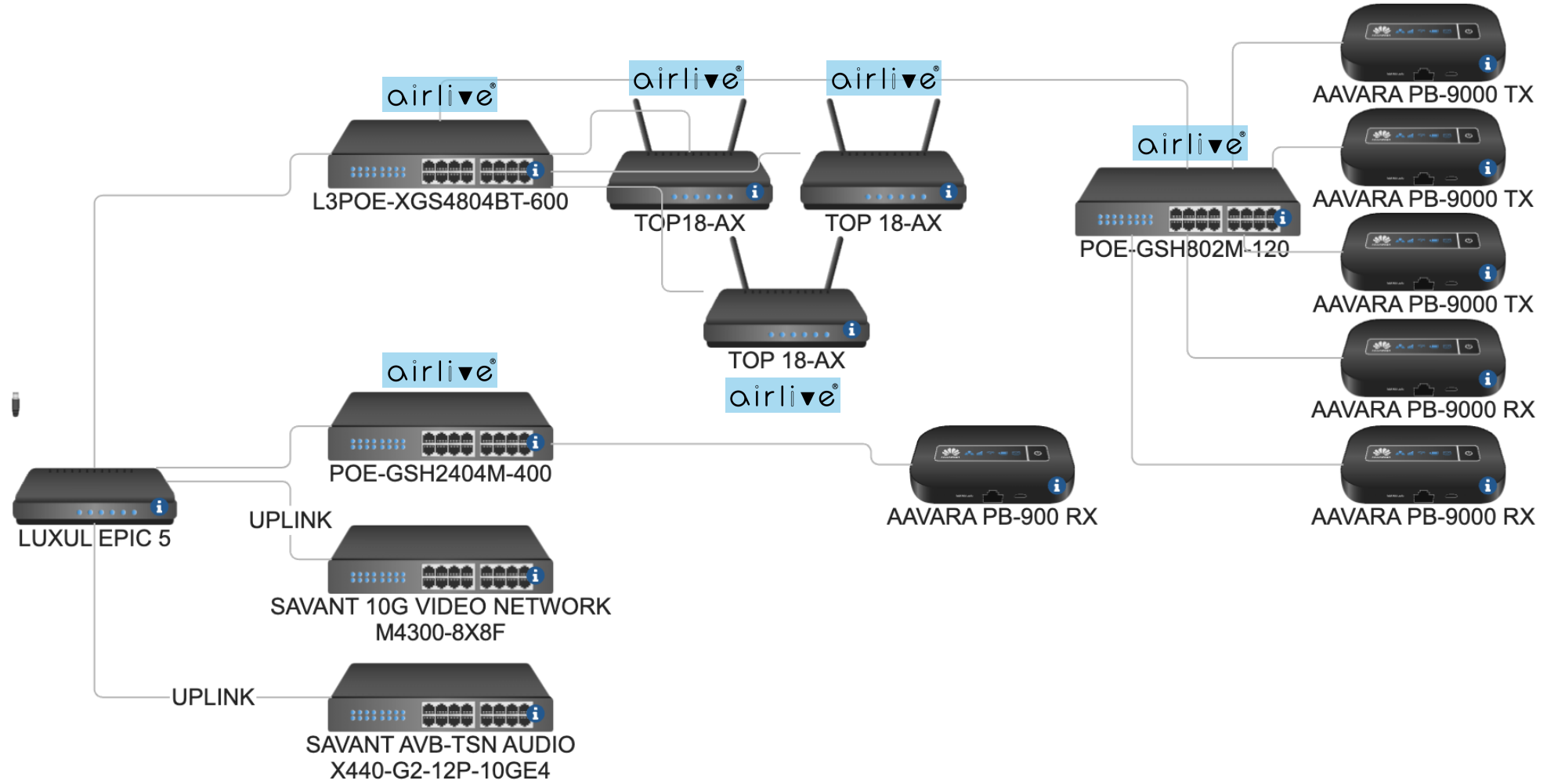
Inwall Wireless AP



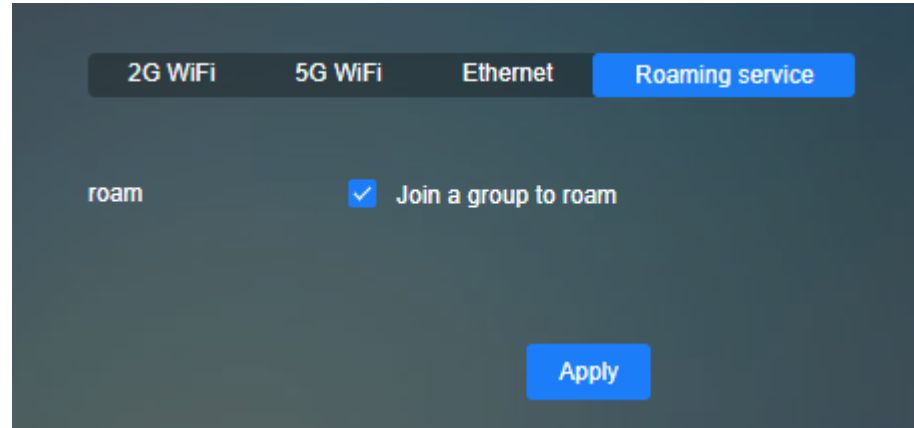
Outdoor Wireless AP



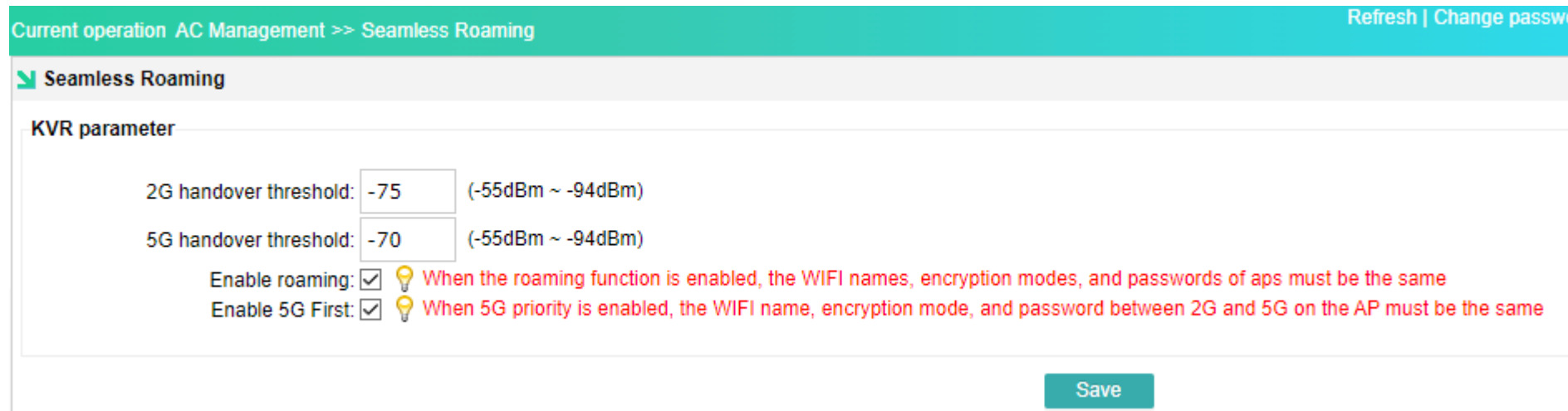
AirLive Ceiling AP with AV Transmitter



Setup Wireless Roaming with AirCloud



Setup Wireless Roaming with Controller



AirCloud Cloud Portal - Using Cloud Android App



Using a cloud app for managing and configuring your network devices:

1. Login by cloud account
2. Bind device by APP
3. View current Wi-Fi device via cloud APP
4. Configure Wi-Fi settings and templates
5. Network Topology review and troubleshooting
6. Device alarm configure

The screenshot displays the AirCloud Cloud Android app interface, showing several key screens:

- Bind Device:** A screen for binding a device, featuring a MAC address input field with an example (XX:XX:XX:XX:XX:XX) and an OK button.
- Info:** A screen displaying device information for a project named "My Project". It shows MAC (00:4F:4E:00:00:00), IP (192.168.0.143), Mode (AP), Type (Inwall-U618AX), and Name (inwall). It also displays CPU usage (1%) and Memory usage (40%).
- Batch Settings:** A screen showing a list of devices. The selected device has MAC 00:4F:4E:00:00:00, IP 192.168.0.143, and is an AP. It is currently inwall mode.
- Topology:** A network topology diagram showing an Internet cloud connected to an inwall device, which is further connected to three Camera devices and one PC device.
- Alarm:** A screen for configuring device alarms. It includes options for "Devices are frequently online and offline" (toggle on), "Alarm threshold" (3 Min/Thrice), and "Push model" (Email). It also shows CPU and Memory monitoring options.

The bottom navigation bar includes icons for Scan, Manually, Name, Setting, User, Template, Reboot, Allocation, Unbind, and Activate. A legend at the bottom right defines link quality (Excellence, Good, Weak, Poor, Disconnect, Only linked) and device status (Online, Offline, Virtual).

AirCloud –Multi Wan WiFi Controller Gateway

SDW-128GM

Suitable for Hotel, School, and Office

airlive®

Function as standalone UTM Gateway

- Optional function to be as Enterprise standalone UTM Gateway
- 1(4)x Giga Lan, 1(4)x Giga Wan
- **WAN Bonding**
- IPTV Setting Support
- Firewall support: IP/Mac/URL Filter
- User Link Flow Monitor
- Port Mapping/DMZ Support
- Internet status Monitor

Function as Wireless AP Controller

- Major function, to manage and work with selected wireless AP or CPE
- 802.11kvr Seamless WI-FI Roaming
- **Support 128 Aps one touch deploy**
- **AP Config Template/Deploy**
- Supports batch setup and configuration with group firmware upgrade & group restart
- **Auto AP discovery**
- AP Controller Operation Mode
- Central config the SSID, password, RF power ,IP address, channel, AP location
- Smart QoS/Behavior Control
- AP Controller to manage multiple AP centralized
- AP Automatic Upgrade



SDW-128GM



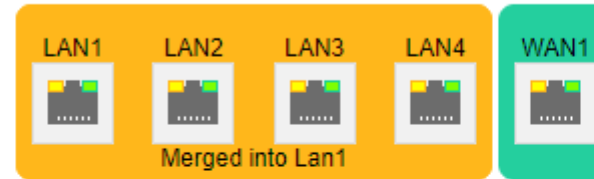
- ✓ **Work with all inwall AP/Ceiling/Outdoor AP**
- ✓ **Support 128 AP's**
- ✓ **Support AirCloud**

AirCloud –Multi Wan WiFi Controller Gateway

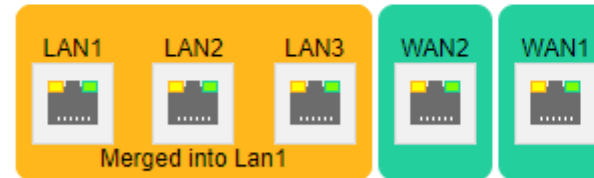
What is new on Wireless Controller



4LAN + 1WAN



3LAN + 2WAN



2LAN + 3WAN



1LAN + 4WAN



Advance

Merge all LAN ports into LAN1

Save

Note: After the physical port feature definition is modified, the router needs to be reconfigured.

AirCloud –Multi Wan WiFi Controller Gateway

Suitable for Hotel, School, and Office



Model	WLAN-64GM	WLAN-128GM	SDW-128GM
WAN	1	1	1 (Max 4)
LAN	4	4	1 (Max 4)
Max AP	64	128	128
Wan Bonding	No	No	Y(4)
Operation Mode	AP Controller/Enterprise Gateway		
Cloud Portal Auth	MAC Auth, member auth , one-click auth, No Auth		
AP Manage	Auto AP discovery, AP Config Template or Central config the SSID, password, RF power, IP address, channel, AP location		
Management	AirCloud		

AirCloud – Wireless Indoor Ceiling AP



✓ Free management software

Suitable for Hotel, School, and Office



Central Management Supported	Cloud Management supported	Live Status Monitor	AP/Gateway Mode
2.5 Giga WAN	Seamless Roaming	FIT/FAT Mode	48V PoE

802.11ax	1800Mbps	Dual Band
RJ45 Port Hide	Automatic frequency modulation optimization	Seamless Roaming



Model	TOP12AC	TOP18AX	TOP30AX	TOP30AX-2.5G	TOP54AX-2.5
Wireless	WiFi5 AC1200	WiFi6 AX1800	WiFi6 AX3000	WiFi6 AX3000	WiFi6 AX5400
Physic Port	2x Giga POE	2x Giga POE	1x Giga POE	1x2.5Gb PoE 1X Giga	1x2.5Gb PoE 1X Giga
Software	WIFI channel analysis Support 8 Multiple SSID AP, Gateway, FIT/FAT AP 802.11kvr Seamless WI-FI Roaming				
Management	WLAN Controller AirCloud				

Ceiling AP Application

Application Scenarios: Restaurant, Hotel, Shopping Mall, Exhibition Centre, Meeting Room



Restaurant



Hotel



Shopping Mall



Exhibition Centre



Meeting Room

Wireless Roaming Services



AirCloud – Wireless InWall AP

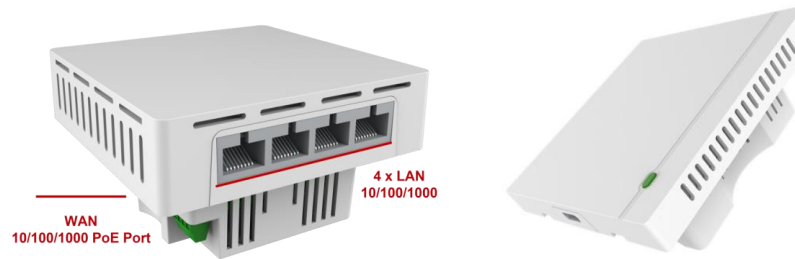


✓ Free management software

Suitable for Hotel, School, and Office

Central Management Supported	Cloud Management supported	Live Status Monitor	AP/Gateway Mode
2.5 Giga WAN	Seamless Roaming	FIT/FAT Mode	48V PoE

- 802.11ax
- 1800Mbps
- Dual Band
- RJ45 Port Hide
- Automatic frequency modulation optimization
- Seamless Roaming



Model	InWall-U168AX	InWall-30AX
Wireless	WiFi6 AX1800	WiFi6 AX3000
Physic Port	1x Giga PoE 4x Giga	1x 2.5Gb(PoE) 1x Giga
Software	WIFI channel analysis Support 8 Multiple SSID AP, Gateway, FIT/FAT AP 802.11kvr Seamless WI-FI Roaming	
Management	WLAN Controller AirCloud	

Inwall AP Office Application



PoE Switch

Inwall AP



Inwall AP



Inwall AP



InWall AP Application

Application Scenarios: Restaurant, Hotel, Shopping Mall, Exhibition Centre, Meeting Room



Restaurant



Hotel



Shopping Mall



Exhibition Centre



Meeting Room

AirCloud – Wireless Cloud solution, Wireless Outdoor



Outdoor
AX | AC | N

Antenna
Integrated

AirCloud

IP67|65

POE



Model	AWOD-30AXi	AWOD-12ACi	AirDual-AC12	AirMax5Xll
Wireless	WiFi6 AX3000	WiFi5 AC1200	WiFi5 AC1200	WiFi4 N300
PTP Distance	300M2	200M2	5KM	3KM
Port	1xGiga PoE 48V			1x100mbps PoE 48V
Antenna (H)	360°	360°	60/14°	33°
Antenna (V)	44°	44°	60/7°	33°
Software	WIFI channel analysis Support 8 Multiple SSID AP, Gateway, Repeater 802.11kvr Seamless WI-FI Roaming			4x SSID AP, Repeater
Management	AirCloud			None



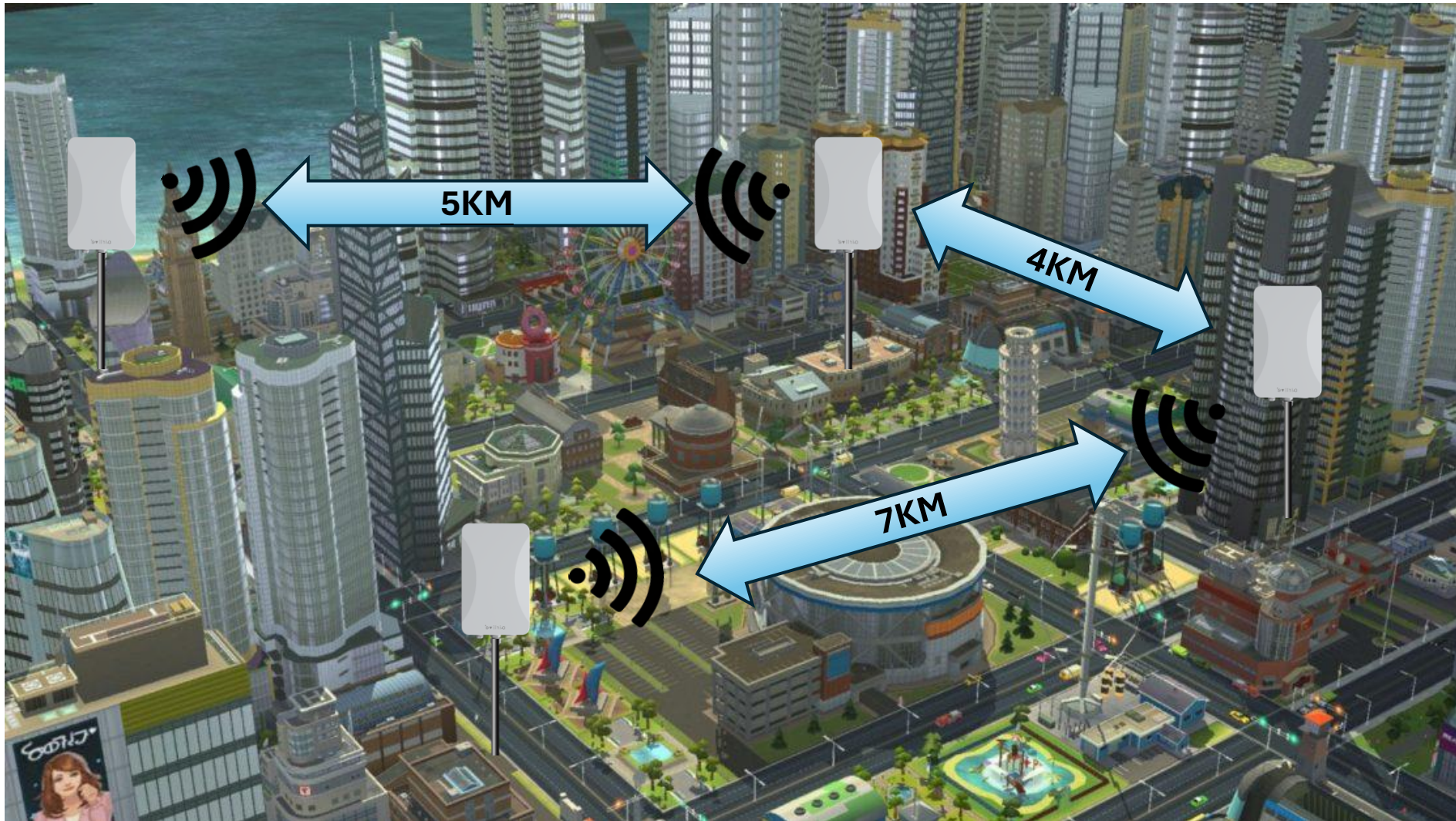
Outdoor AP Application

Application Scenarios: Long distance wireless connection
Point to Point



Outdoor AP Application

Application Scenarios: Point to Multiple Point Connection



Outdoor AP Application



Application Scenarios: Hotel Swimming Pool



Outdoor AP Application

Application Scenarios: Smart City, Hotel Outdoor Service, Smart Farm, Exhibition Centre, Offshore Wind Farm



Smart City



Hotel Outdoor Service



Smart Farm



Exhibition Centre



Offshore Wind Farm

AirLive Solution – Home Wi-Fi

Wi-Fi 6 Router

Wi-Fi6 USB



MESH Bundle AX 1800Mbps Wireless 6



WiFi6 AX1800 Mesh Router

- WiFi6 AX1800
- Hardware Button 1 touch setup wireless Mesh
- 1x Wan 4xLan

airlive®

USB-18AX: Wi-Fi 6 AX 1800Mbps USB3.0 WiFi Adapter

- WiFi6 AX1800
- USB3.0
- Driver built-in
- Windows/Linux/Mac Os





AirLive Broadband PON Solution

Cloud
EMS

Gpon
OLT

Gpon
ONU

Gpon
WDM

Main Features

Cloud Platform



- ✓ One click deployment, convenient, safe and fast
- ✓ Operation and maintenance anytime, anywhere
- ✓ Can be deployed in window or linux system

Batch Management, Plug & Play



- ✓ Automatic authorization management
- ✓ Execution plan management
- ✓ Support GPON OLT series management

Monitoring



- ✓ Large-scale collection of practical data, real-time monitoring
- ✓ Log records
- ✓ Alarm collection and mailbox push

Master & Slave Data Backup

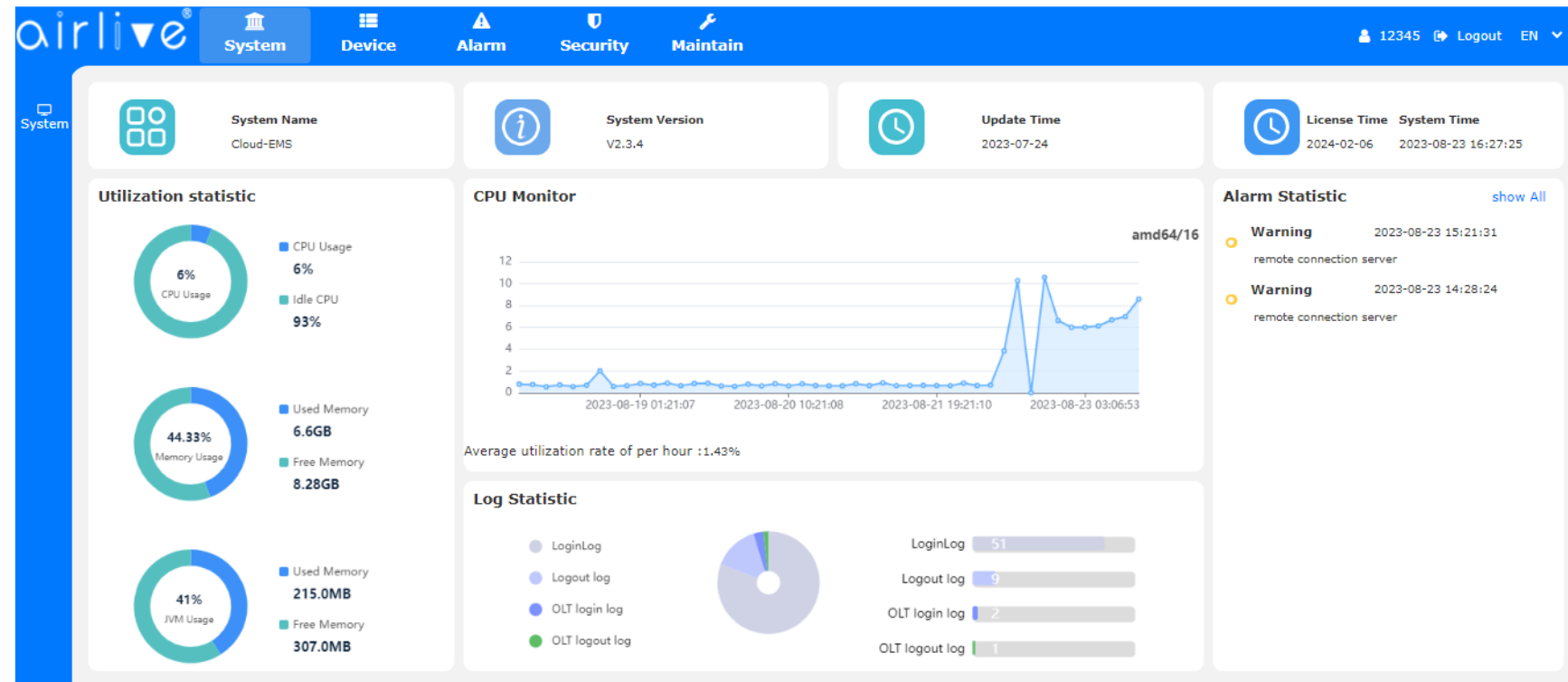


- ✓ Automatic hot data backup
- ✓ Disaster recovery
- ✓ Uninterrupted business



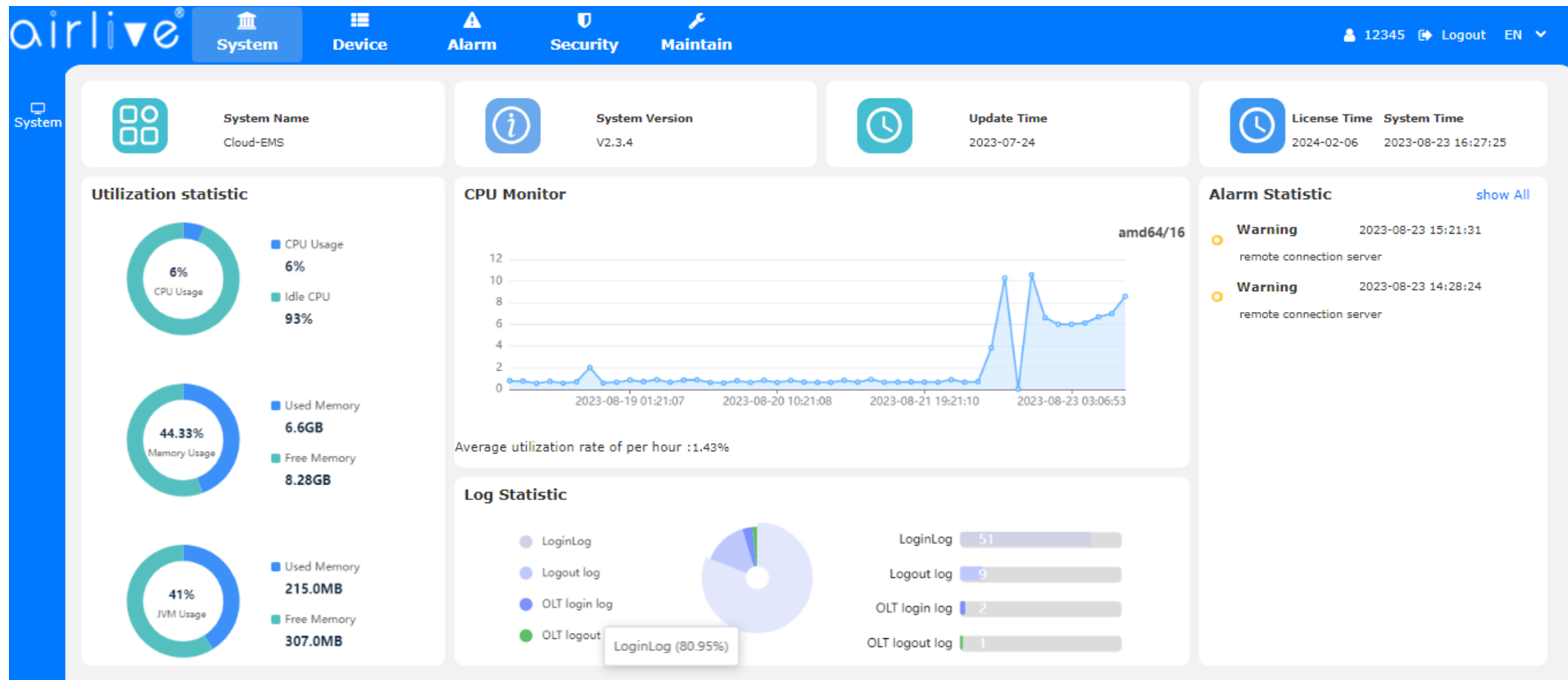
Real-time Data Collection & Analysis

- ✓ Real time collection of system and equipment operating status
- ✓ Analysis of system and equipment health status



Real-time Network monitoring: AirLive EMS Cloud provides real-time monitoring of network performance, including traffic analysis and device health status, allowing administrators to quickly identify and troubleshoot issues.

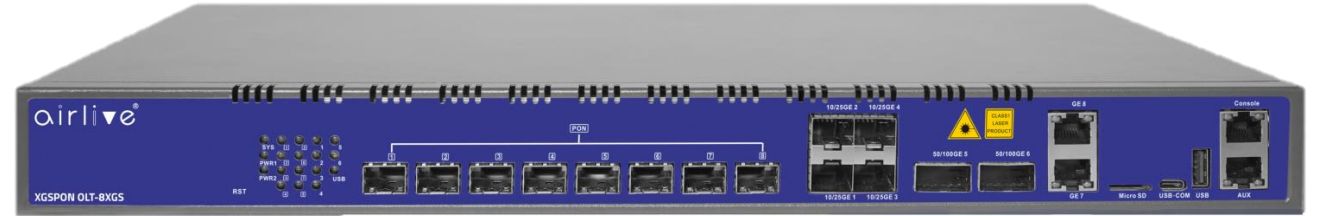
Different access levels: AirLive EMS Cloud offers different access roles for management of the platform; these roles can be for viewing or full control of the platform.



XG/XGS-PON OLT and Cloud



2x XG(S)PON Port SFP+
2x 1G SFP/10G SFP+
2x 10/100/1000 RJ-45 Port
Console Port
AUX Port
USB Port



XG(S)PON Port SFP+
10/25G SFP28
100G QSFP28
10/100/1000 RJ-45 Port
USB Port
Type C Port
Micro SD
Console Port
AUX Port

Model	OLT-2XGS	OLT-8XGS
Pon Port	2	8
SFP Uplink	2x 10G	2x 25G
QSFP Uplink	N/A	2x 100G
RJ45 Uplink	2x Giga	2x Giga
Support Device	512 Onu	2048 Onu
Pon Speed	XG-PON ONU: UL 2.5Gbps, DL: 10Gbps XGS-PON ONU: UL 10Gbps, DL: 10Gbps	



Model	ONU-10XG-AX304P-2.5G	ONU-10XGS-AX304P-2.5G
Pon Speed	UL 2.5Gbps, UL: 10Gbps	UL 10 Gbps, UL: 10Gbps
Lan Port	1x 2.5G	1x 2.5G
Lan Port	3x Giga	3x Giga
Wireless	AX3000	
Telephone	1x POTS(SIP)	
USB Port	1x USB3.0	

GPon OLT and Cloud Solutions

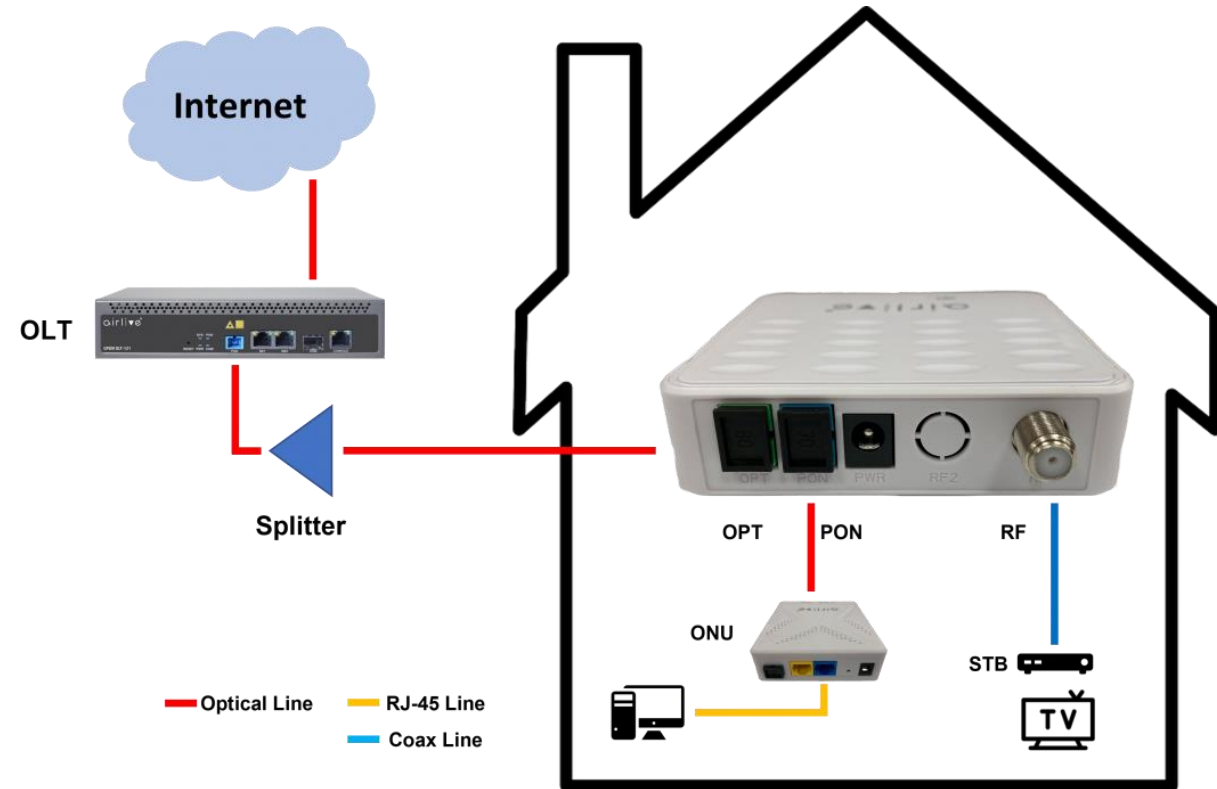


Model	OLT-121	OLT-422	OLT-824	OLT-1644
Pon Speed	1.25Gbps UL/2.5Gbps DL			
Pon Port	1 built-in	4	8	16
Support Device	128	512	1024	2048
Uplink RJ45	2x Giga	2x Giga	2x Giga	4xGiga
Uplink SFP+	1x 10G	2x 10G	2x Giga 2x10G	4x 10G

Gpon to CATV ONU

AirLive GPON ONU-CATV

- ✓ 1 GHz operating bandwidth
- ✓ WDM integrated (1490nm/1310nm) PON
- ✓ RF output level adjustable, 0~ 20dB
- ✓ Optical AGC range:0 to -15dB
- ✓ Wide optical power input range -18~+2dBm
- ✓ Low power consumption<1.0W

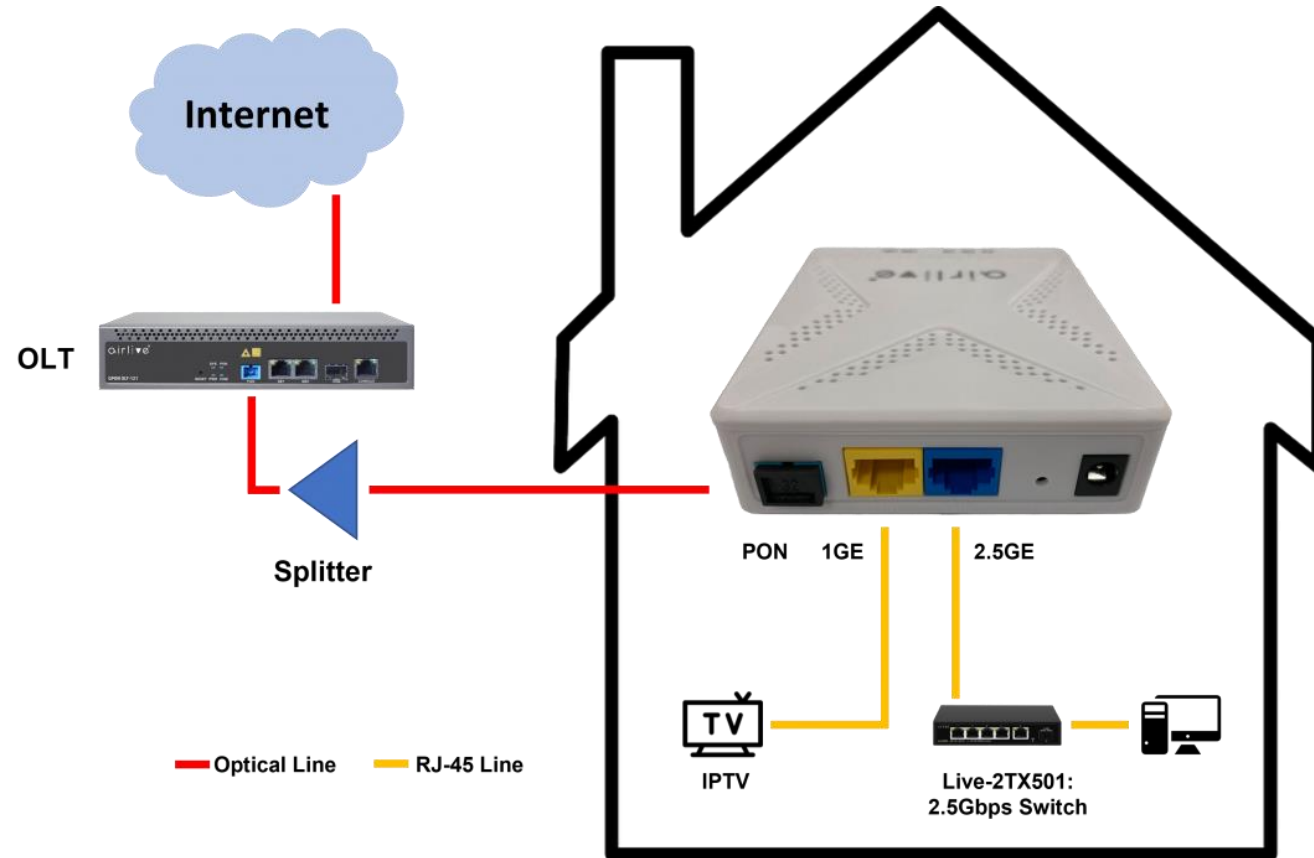


- ✓ Gpon to CATV
- ✓ CATV port
- ✓ Price affordable

2.5GE xPON ONU

AirLive GPON 2.5GE XPON ONU

- ✓ 1*XPON+1*2.5GbE+1*GE ONT
- ✓ Support 2500mbps Lan port x1

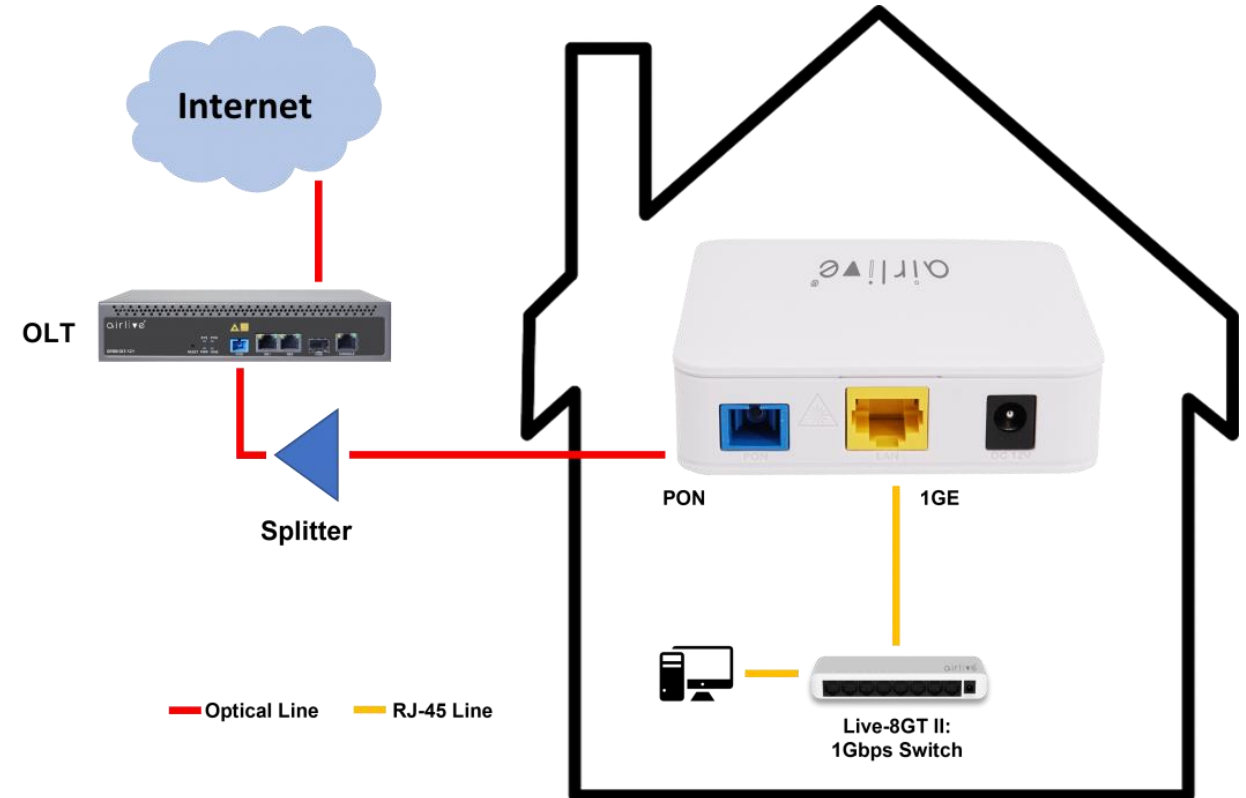


- ✓ xPon
- ✓ 2.5GE Port
- ✓ Price affordable

XPON ONU-1GE

AirLive XPON 1GE XPON ONU Single Port

- ✓ 1x XPON Dual Mode Automatically Access to EPON/GPON
- ✓ 1x 1Gbps RJ-45 Port for High-speed networking
- ✓ Powerful Firewall
- ✓ Small size easy to use



- ✓ xPon
- ✓ 1GE Port
- ✓ Price affordable

Gpon/ XGSpon Application

Application Scenarios: Telcom, Smart City, Hotel



Telcom



Smart City



Hotel

airlive®

AirCAM Surveillance Solution



- **AirLive AirCAM, Enterprise and SMB Surveillance Solution**
- **AirCAM NVR (ANVR)**
- **AirCAM ECO PoE Camera**
- **AirCAM Smart AI PoE camera**
- **Full Range of business type PoE Camera/NVR**
- **APP Support/ Windows/ Android/ Apple iOS**



AirLive AirCAM, Enterprise Surveillance Solution

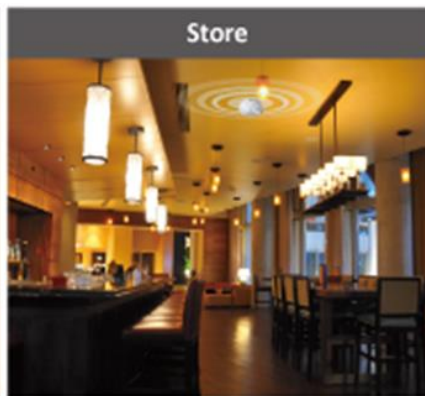
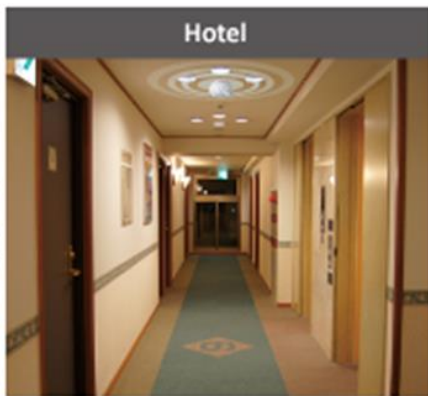
High Resolution IP Camera

AirCAM – Enterprise Surveillance



AirLive AirCAM Surveillance IPCAM

AirCAM Smart AI PTZ Series				AirCAM ECO Series			
PTZ Bullet	PTZ Dome	Bullet	Dome	ECO Bullet	ECO Bullet	ECO Dome	ECO Dome
PTZB-630MAI	PTZD-630MAI	BU-640MAI	VD-640MAI	BU-225S	BU-240M	VD-240M	MD-215
PTZ Bullet Smart AI	PTZ Dome Smart AI	Bullet Smart AI	Dome Smart AI	ECO Bullet	ECO Bullet	ECO Dome	ECO Mini Dome
6MP, IP66, 802.3af PoE	6MP, IP66, 802.3af PoE	6MP, IP66, 802.3af PoE	6MP, IP66, IK10, 802.3af PoE	2MP, IP66, 802.3af PoE	2MP, IP66, 802.3af PoE	2MP, IP66, IK10, 802.3af PoE	2MP, IP66, 802.3af PoE
PTZ	PTZ	-	-	-	-	-	-
2.8-12mm Motorized	2.8-8mm Motorized	2.8-12mm Motorized	2.8-12mm Motorized	3.6mm Fixed	2.8-12mm Motorized	2.8-12mm Motorized	3.6mm Fixed
4X Optical Zoom	3X Optical Zoom	4X Optical Zoom	4X Optical Zoom	-	4X Optical Zoom	4X Optical Zoom	-
30M IR D-WDR	30M IR D-WDR	40M IR D-WDR	40M IR D-WDR	25M IR D-WDR	40M IR D-WDR	40M IR D-WDR	15M IR D-WDR
Built-in MIC and Speaker	Built-in MIC and Speaker	Built-in MIC/SD-Slot/DIDO	Built-in MIC/SD-Slot/DIDO	-	-	-	-
Smart AI	Smart AI	Smart AI	Smart AI	-	-	-	-



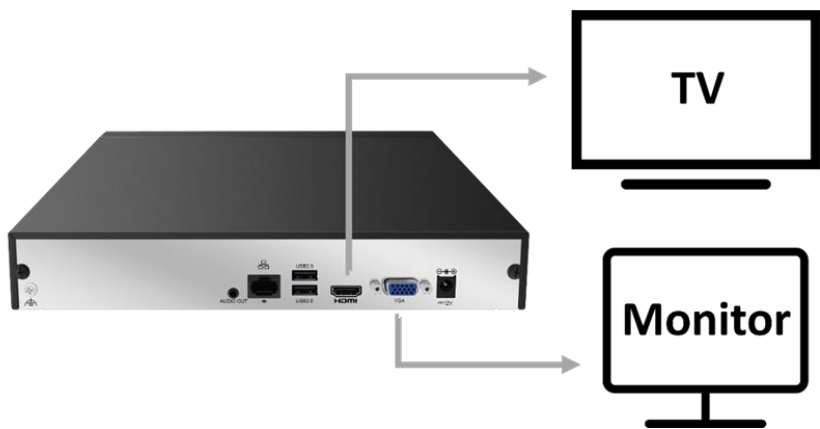
ANVR –Network Video Recorder, Linux



Based



**** ANVR 4/8/16/32 for SMB; retail; shops/stores;
** 64/128CH ANVR in option, PoE in option**



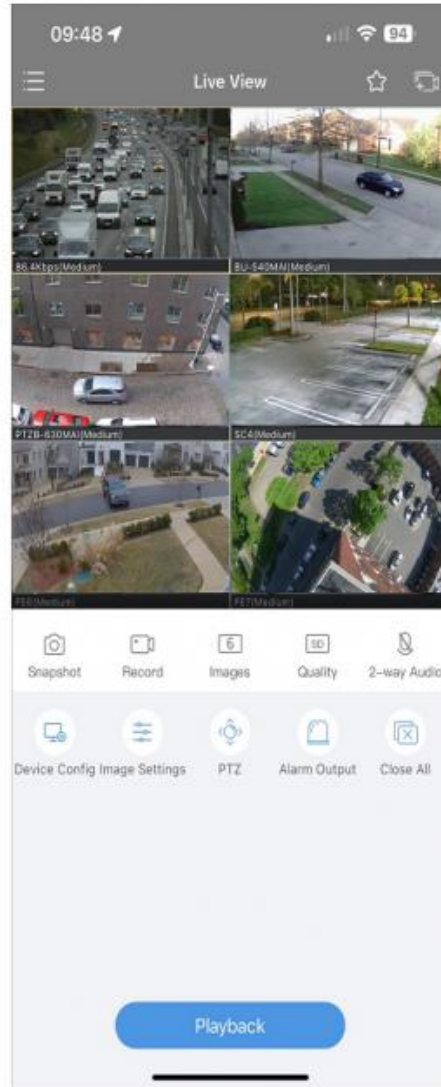
**Smart AI
Human/Vehicle**

**Real-time
Remote
Monitoring**

**Dual Monitor
Support**

**Smart &
Efficient
Search**

ANVR Model	ANVR4	ANVR8	ANVR16	ANVR32 NEW!
Channel	4CH	8CH	16CH	32CH
Max. Recording	25/30fps @ 8MP / 5MP / 3MP / 2MP 1080 Recording			25/30fps @ 12MP / 8MP / 5MP / 1080P Recording
Simultaneous Playback	4CH	8CH	16CH	16CH
IPC Audio Input	4CH	8CH	16CH	32CH
Output	Support 4K HDMI and VGA output (dual monitor capable)			
SATA slots	1	1	2	4
Max. HDD	8TB/HDD	8TB/HDD	8TB/HDD	10TB/HDD
Smart AI	Smart VCA AI functions, work with AirCAM Smart AI IPCAM			
Encryption & ONVIF	H.265+ / H.265 / H.264 compliant; ONVIF Compliant			
APP	ANVR APP Support			
Max. Bandwidth	64Mbps	64Mbps	160Mbps	384Mbps
Smart Intrusion Prevention / Detection /Search	Support	Support	Support	Support



ANVR Android/iOS App Support

Our NVR offers seamless Android and iOS app support, ensuring you stay connected and in control. Liveview your camera feeds remotely, configure camera settings on-the-go, and manage PTZ (Pan-Tilt-Zoom) functionality with ease. Empower yourself with the flexibility to monitor and adjust your surveillance system from anywhere.

What's New AI VCA Camera



Smart AI VCA IP Cameras

airlive®



Airlive introduces its latest innovation in video surveillance technology—the AI VCA (Video Content Analysis) IP camera. This cutting-edge camera leverages advanced artificial intelligence algorithms to analyze video content in real time, enabling precise detection of specific events or objects



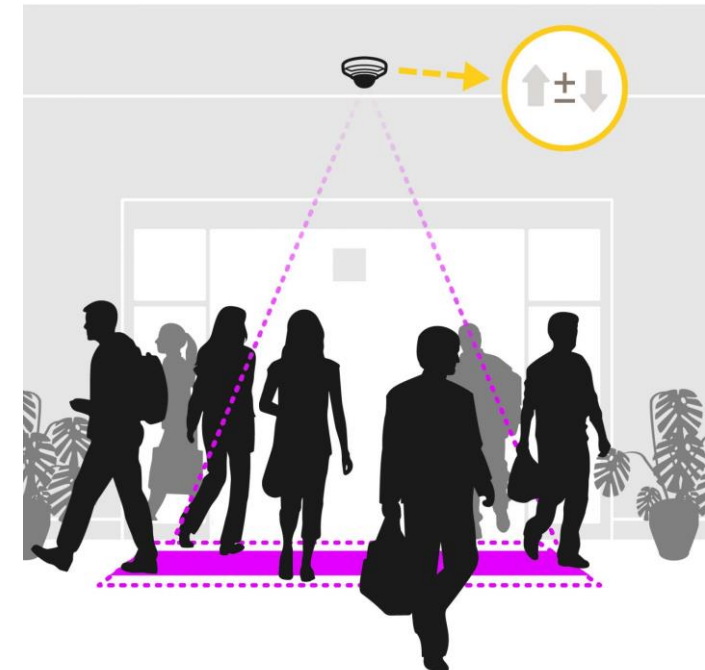
- **People Flow Counting:**

Accurate people counting is crucial for crowd management, retail analytics, and security. The AI VCA camera tracks the number of people entering or exiting specific areas. Retail stores, transportation hubs, and public spaces benefit from this feature.

- **Crowd Density Monitoring:**

In crowded environments, maintaining safe distances is essential.

The camera assesses crowd density and alerts operators when thresholds are exceeded. Ideal for events, public gatherings, and social distancing compliance.





Smart AI VCA IP Cameras



- **Intrusion Detection:**

Protect restricted zones with intrusion detection capabilities. The camera identifies unauthorized individuals entering predefined areas. Security personnel receive immediate notifications, ensuring timely responses.

- **Enter and Leave Area Detection:**

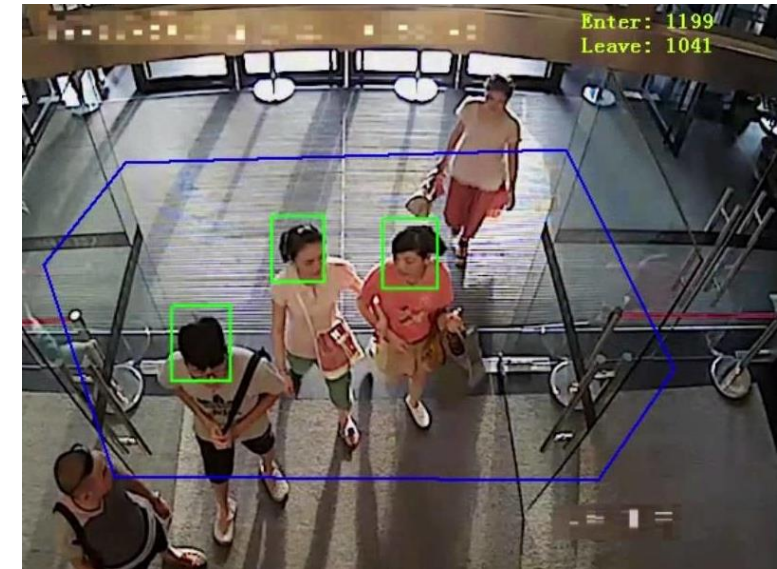
Customize monitoring zones based on your specific needs. Receive alerts when someone enters or exits designated areas. Useful for access control, perimeter security, and building management.

- **Cross Line Detection:**

Define virtual lines within the camera's view. Alarms are triggered when an object or person crosses these lines. Enhances perimeter security and prevents unauthorized access.

- **Human & Vehicle Detection with Alarm:**

The AI VCA camera distinguishes between humans and vehicles. Targeted alerts ensure relevant notifications for specific scenarios. Ideal for parking lots, traffic management, and safety monitoring.



M2M

**4G Industrial
Router**

**5G Industrial
Router**





M2M Application



- **Industrial Automation:** M2M is used to monitor and control equipment, improving efficiency and safety in manufacturing plants.
- **Remote Monitoring:** Kiosks equipped with M2M technology can be monitored remotely, allowing for real-time updates and maintenance.
- **Healthcare:** Remote monitoring of patients' health through M2M can improve patient care and reduce hospital visits.
- **Smart Cities:** M2M contributes to the management of traffic control, public safety, and utilities, making cities smarter and more efficient.
- **Logistics and Supply Chain:** M2M enhances tracking and management of assets, optimizing logistics operations.





Truck tracking system



WiFi Hot Spot



Bus Surveillance



Smart Meter System



Industrial Sensor Monitor



ATM system



Mobile POS System



Energy System



Outdoor Signage



Thank You!

airlive